

LITERATURE REVIEW OF UNCERTAINTY OF ANALYSIS METHODS

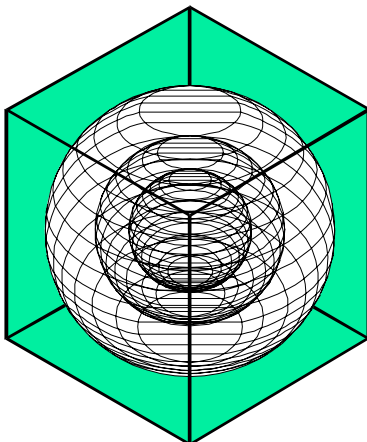
(PV F-Chart Program)

Report to the
Texas Commission on Environmental Quality



Jeff S. Haberl, Ph.D., P.E.
Soolyeon Cho

October 2004



ENERGY SYSTEMS LABORATORY

Texas Engineering Experiment Station
Texas A&M University System

Disclaimer

This report is provided by the Texas Engineering Experiment Station (TEES) pursuant to Section 388.005 and Section 388.003, (2) (A) & (B) of the Texas Health and Safety Code and is distributed for purposes of public information. The information provided in this report is intended to be the best available information at the time of publication. TEES makes no claim or warranty, expressed or implied, that the report or data herein is necessarily error-free. Reference herein to any specific commercial product, process, or service by trade name, trademark, manufacturer, or otherwise, does not constitute or imply its endorsement, recommendation, or favoring by the Energy Systems Laboratory or any of its employees. The views and opinions of authors expressed herein do not necessarily state or reflect those of the Texas Engineering Experiment Station or the Energy Systems Laboratory.

Acknowledgements

The Energy Systems Laboratory greatly appreciates the assistance and guidance provided by the staff at the Texas Commission on Environmental Quality on this report, especially the assistance of Mr. Steve Anderson. The authors would also like to thank Profs. William Beckman and Sanford Klein for their helpful review of this document. This report completes one of the deliverables for the Emissions Calculator project, and is intended to comply with the TCEQ guidance *Guide for Incorporating Energy Efficiency/Renewable (EE/RE) Projects into the SIP, Feb. 2004*.

1 Executive Summary

This report reviews the reported uncertainty of the PV F-Chart analysis method by reviewing the published related accuracy of PV F-Chart analysis versus measured data, PV F-Chart predictions versus other methods, and PV F-Chart predictions versus TRNSYS simulations. This report begins with a review of the history of the PV F-Chart method, and includes an example PV F-Chart calculation. In summary, from the literature it was found that hourly PV F-Chart analysis versus measured data were shown to be within 4% of on-site measurement, PV F-Chart predictions versus TRNSYS simulations and another graphical method were also within 4% of annual values.

TABLE OF CONTENTS

1	Executive Summary	3
2	Introduction.....	6
3	History of the PV F-Chart Method	6
4	Applications of the PV F-Chart Method	8
5	Accuracy of the PV F-Chart Method.....	8
6	Basic Equations of the PV F-Chart Method (PV F-Chart User's Manual, Klein & Beckman, 1993, Chapter 5 Algorithms, Duffie and Beckman 1991).....	9
6.1	Example 1: Calculation of Monthly Electrical Output and Solar Fraction for a PV Power System Array (From: Duffie & Beckman (1991), Example 23.7.1, pp. 790-792).....	11
6.2	Example 2: Calculations of Monthly Electrical Output and Solar Fraction for a PV Power System Array Using the PV F-Chart Program of DOS Version 3.1.	14
7	References.....	16

LIST OF FIGURES

<i>Figure 1. History Diagram of the PV F-Chart Method.</i>	7
<i>Figure 2. Selection of System Type in the PV F-Chart Program.</i>	14
<i>Figure 3. Selection of Collector Type in the PV F-Chart Program.</i>	14
<i>Figure 4. Detail Input Parameters Used in the PV F-Chart Program</i>	15
<i>Figure 5. Calculation Results of Monthly-Average Fraction</i>	15
<i>Figure 6. Calculation Results of Yearly-Average Fraction</i>	16

LIST OF TABLES

<i>Table 1. Values and Calculation Results for the Calculation of Monthly-Average Fraction of the Load Carried by the PV System without Batteries.</i>	13
--	----

2 Introduction

This literature review covers the PV F-Chart program, which is one of the legacy programs in the ESL's Emissions Calculator (eCALC), a web-based emissions reductions calculator developed for the State of Texas. The eCALC program is a tool for those who want to see how their energy savings has reduced NO_x emissions, a by-product made during the burning of fossil fuels. This report includes a brief history of the PV F-Chart method, its applications, accuracies, basic equations, and an example calculation.

3 History of the PV F-Chart Method

The PV F-Chart method is an analysis that is useful for the design of photovoltaic systems and for the estimation of the long term average performance of utility interface systems, battery storage systems, and systems without interface or battery storage. The PV F-Chart method consists of a combination of correlations and fundamental expressions for the hourly calculations of solar radiation at a given location. It uses long-term monthly average solar radiation and ambient temperature to predict the annual performance of a photovoltaic array. It was developed by Klein and Beckman (1983; 1985) as shown in Figure 1, and is based on the previous work by Siegel et al. (1981), Evans (1978; 1981), and Clark et al. (1983 and 1984). The PV F-Chart analysis draws on the earlier work by Siegel et al. (1981) who developed a method for estimating the monthly-average conventional energy displaced by a photovoltaic system, and Evans (1978; 1981) who developed a hybrid photovoltaic/thermal models and a simplified procedure for predicting long-term monthly average output from a photovoltaic array. The work of Siegel and Evans was extended by Clark et al. (1983 & 1984), who developed a computationally simplified algorithm for evaluating the hourly utilizability function, and a method for predicting the long-term performance using the utilizability function. The utilizability function can be traced back to the work by Klein et al. (1978), Liu and Jordan (1963), Hottel and Whillier (1955), and Whillier (1953a; 1953b).

There are three primary procedures used in the PV F-Chart method, including: 1) estimating the monthly average hourly solar radiation on inclined surfaces from average-daily, monthly solar radiation; 2) calculating the monthly-average, hourly solar radiation utilizability; and 3) use of the monthly average hourly ambient temperatures in the PV array performance prediction. Additional details about the method can be found in the PV F-Chart manual (Klein and Beckman, 1985). The ϕ concept, or utilizability, is also central to the development of the PV F-Chart method. Whillier (1953a; 1953b) was the first to develop the concept of utilizability. Hottel and Whillier (1955) later developed location-dependent monthly average hourly utilizability and Liu and Jordan (1963) generalized the Whillier's ϕ concept to location-independent, monthly average hourly utilizability.

The Windows version of PV F-Chart, version 3.01W, was developed by Klein and Beckman (1993), and is available on the Internet web site www.fchart.com. A PV F-Chart version running in the MAC system is also available. Version 3.3 of the PV F-Chart method running in the DOS mode is the version used in the ESL's emissions calculator.

History of the PV F-Chart Method

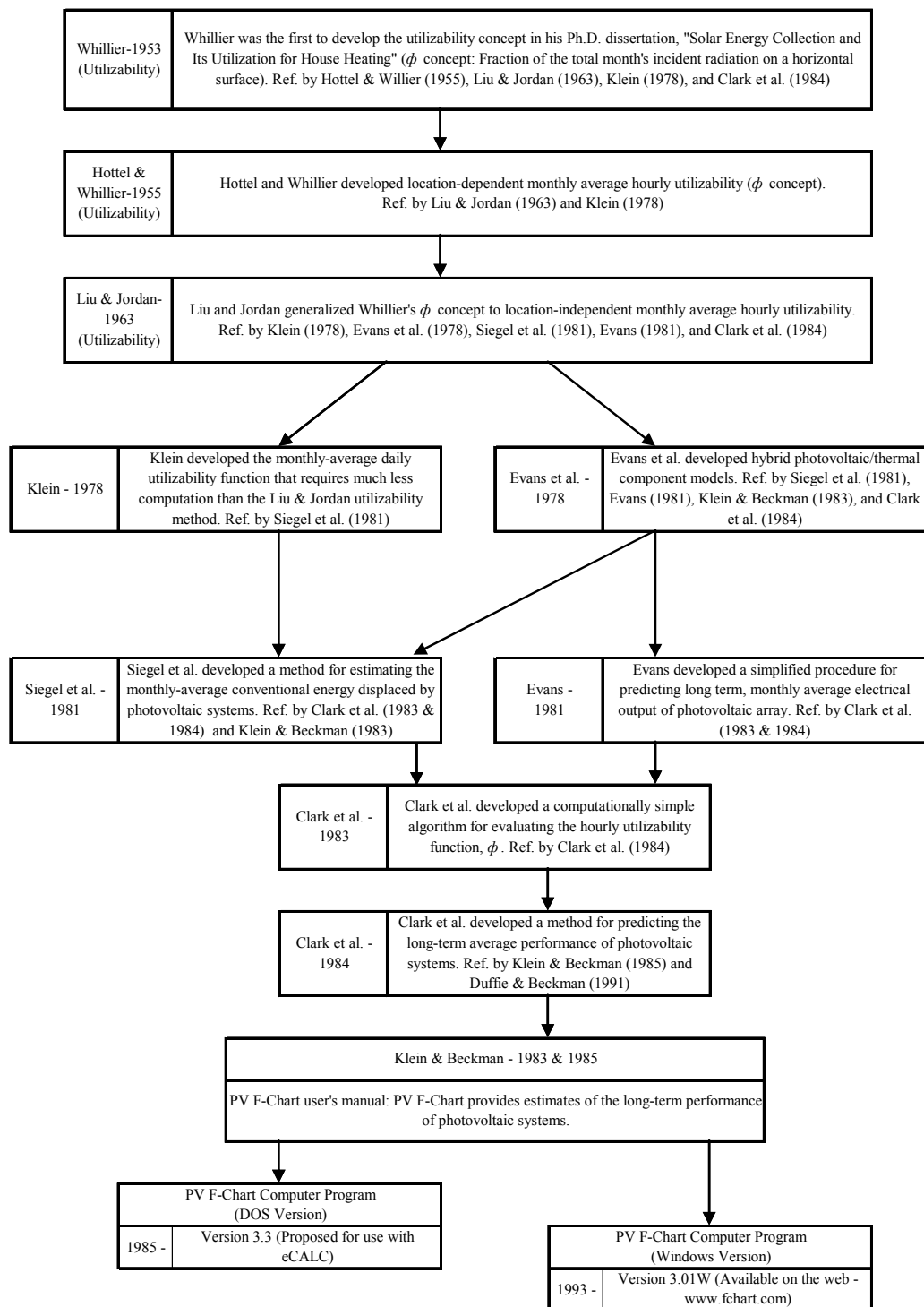


Figure 1. History Diagram of the PV F-Chart Method.

4 Applications of the PV F-Chart Method

PV F-Chart estimates the long-term, average performance of the photovoltaic systems listed below:

- ❑ Utility feedback system
- ❑ Battery storage system
- ❑ No feedback or storage system

PV F-Chart can also evaluate the performance of photovoltaic systems with the following different type of collector and collector tracking schemes:

- ❑ Stationary Flat-Plate Collectors
- ❑ Compound Parabolic Concentrating Collectors
- ❑ 1 and 2-Axis Tracking Collectors

PV F-Chart provides energy performance and economic evaluations for each scenario analyzed.

5 Accuracy of the PV F-Chart Method

Several studies were identified that cited the accuracy of the PV F-Chart method, including Menicucci and Fernandez (1984), Hoover (1980), and Clark et al. (1984). Menicucci and Fernandez (1984) quantified the accuracy of the PV F-Chart and SOLCEL-II performance models (Hoover, 1980) based on field data. In this study two sites were analyzed, the Northeast Residential Experiment Station (NERES) in Boston, Massachusetts, and the Southwest Residential Experiment Station (SWRES) in Las Cruces, New Mexico, using two system configurations, integral and stand-alone. The study reports that the difference of the results between measurement and PV F-Chart calculations was 4% on an annual basis when the radiation was measured on the plane of the collector array.

Clark et al. (1984) presented the accuracy of their method (PV F-Chart) for the calculation of the monthly solar load fraction from comparing the results of their method with those of other two methods, TRNSYS simulations (Klein 1973; 1981) and the graphical method of Evans et al. (1981). Clark et al.'s reported that their method agreed well with the TRNSYS hourly simulations, citing an annual difference between the two methods of 4%.

6 Basic Equations of the PV F-Chart Method (PV F-Chart User's Manual, Klein & Beckman, 1993, Chapter 5 Algorithms, Duffie and Beckman 1991).

The monthly-average hourly array electricity output \bar{E}_i for the hour i can be found using the following expression:

$$\text{Equation 1: } \bar{E}_i = A_c \bar{I}_T \bar{\eta}_i$$

where

- A_c = photovoltaic cell array area (m²),
- \bar{I}_T = monthly-average hourly solar radiation on tilted surface (MJ/m²), and
- $\bar{\eta}_i$ = monthly-average array efficiency for the hour i .

The monthly-average hourly solar radiation on tilted surface \bar{I}_T can then be found from the following equation:

$$\text{Equation 2: } \bar{I}_T = \bar{K}_T \bar{H}_o \left[\left(r_t - \frac{\bar{H}_d}{\bar{H}} r_d \right) R_b + \frac{\bar{H}_d}{\bar{H}} r_d \left(\frac{1 + \cos \beta}{2} \right) + \rho_g r_t \left(\frac{1 - \cos \beta}{2} \right) \right]$$

where

- \bar{K}_T = monthly-average daily clearness index,
- \bar{H}_o = monthly-average daily extraterrestrial solar radiation (MJ/m²),
- r_t = ratio of total radiation in an hour to total in a day,
- \bar{H}_d = monthly-average daily diffuse solar radiation (MJ/m²),
- \bar{H} = monthly-average daily solar radiation (MJ/m²),
- r_d = ratio of diffuse radiation in an hour to diffuse in a day (%),
- R_b = ratio of beam radiation on a tilted surface to that on a horizontal surface (%),
- β = tilt of the array from horizontal (degrees), and
- ρ_g = Ground reflectance (%).

The monthly average array efficiency $\bar{\eta}_i$ for the hour i is then found from:

$$\text{Equation 3: } \bar{\eta}_i = \eta_{mp,ref} \left[1 + \frac{\mu_{mp}}{\eta_{mp,ref}} (\bar{T}_{a,i} - T_{ref}) + \frac{\mu_{mp} \bar{I}_T}{\eta_{mp,ref} U_L} \tau \alpha (1 - \eta_{mp,ref}) Z_i \right]$$

where

- $\eta_{mp,ref}$ = maximum power point efficiency from measurement at reference

- condition,
- η_e = efficiency of any power conditioning equipment,
- μ_{mp} = temperature coefficient at the maximum power point efficiency measurement,
- $\bar{T}_{a,i}$ = average ambient temperature for the hour i ($^{\circ}\text{F}$),
- T_{ref} = temperature from measurement at reference condition ($^{\circ}\text{F}$),
- τ = transmittance,
- α = absorptance,
- U_L = collector overall heat loss coefficient, and
- Z_i = $\frac{1}{N\bar{I}_T^2} \sum_{n=1}^N I_{T,n}^2$ (where N = number of days), which can be expressed empirically as,

$$Z_i = \left(\frac{\bar{I}_o}{\bar{I}_T} \right)^2 (a_1 b_1 + a_2 b_2 + a_3 b_3)$$

where

$$\begin{aligned} a_1 &= R_b^2 + \rho(1 - \cos \beta)R_b + \rho^2(1 - \cos \beta)^2 / 4 \\ a_2 &= R_b(1 + \cos \beta - 2R_b) + \rho(1 + \cos \beta - 2R_b)(1 - \cos \beta) / 2 \\ a_3 &= [(1 - \cos \beta) / 2 - R_b]^2 \\ b_1 &= -0.1551 + 0.9226\bar{k}_T \\ b_2 &= 0.1456 + 0.0544 \ln \bar{k}_T \\ b_3 &= \bar{k}_T(0.2769 - 0.3184\bar{k}_T) \end{aligned}$$

The utilizability function, ϕ , is defined using the following expression:

$$\text{Equation 4: } \phi = \begin{cases} 0 & \text{if } X_c \geq X_m \\ (1 - X_c / X_m)^2 & \text{if } X_m = 2 \\ \left| |g| - [g^2 + (1 + 2g)(1 - X_c / X_m)^2]^{1/2} \right| & \text{otherwise} \end{cases}$$

Where

- X_c = monthly-average critical radiation ratio (L_i / E_i , where L_i is the load for the hour i and E_i is the electrical energy output of the array),

$$X_m = 1.85 + 0.169\bar{R}_h / \bar{k}_T^2 - 0.0696 \cos \beta / \bar{k}_T^2 - 0.981\bar{k}_T / \cos^2 \delta$$

where

$$\begin{aligned} \bar{R}_h &= \text{ratio of monthly-average hourly radiation on the tilted surface to that on a} \\ &\text{horizontal surface, } (\bar{I}_T / \bar{I}), \text{ where } \bar{I} \text{ is monthly-average hourly radiation),} \\ \bar{k}_T &= \text{monthly-average hourly clearness index } (\bar{I} / \bar{I}_o), \\ \beta &= \text{slope of the array,} \\ \delta &= \text{declination of the earth, and} \\ g &= (X_m - 1) / (2 - X_m). \end{aligned}$$

6.1 Example 1: Calculation of Monthly Electrical Output and Solar Fraction for a PV Power System Array (From: Duffie & Beckman (1991), Example 23.7.1, pp. 790-792).

Determine the monthly electrical output and solar fraction for a PV power system array with four modules, having the following system characteristics: Nominal Operating Cell Temperature (NOCT) is 46 °C, reference temperature is 25 °C, maximum power efficiency is 10.4%, single module area is 0.427 m², temperature coefficient of maximum power point efficiency is -0.00050, efficiency of maximum power point electronics is 0.9, array slope is 35°, array azimuth is 0°, usable battery capacity is 1200 Wh, battery efficiency is 0.8, location of the system is at a latitude of 40°, the month is March. The monthly-average daily horizontal radiation is 13.2 MJ/m², the ground reflectance is 0.2, and the load is constant at 100 W between 9 AM and 3 PM and zero at other times. The monthly-average hourly temperatures, beginning at 6:00 a.m. are 4, 5, 5, 6, 8, 10, 11, 12, 12, 11, 10, and 9 °C. \bar{K}_T is 0.481, \bar{H}_o is 27.4 MJ/m², r_t is 0.129, r_d is 0.123, R_b is 1.347, δ is -2.4°, Z_i is 1.525, and \bar{H}_d / \bar{H} is 0.448.

Solution for the hour 10 to 11:

From Equation 2, the monthly-average hourly solar radiation on tilted surface is

$$\begin{aligned} \bar{I}_T &= \bar{K}_T \bar{H}_o \left[\left(r_t - \frac{\bar{H}_d}{\bar{H}} r_d \right) R_b + \frac{\bar{H}_d}{\bar{H}} r_d \left(\frac{1 + \cos \beta}{2} \right) + \rho_g r_t \left(\frac{1 - \cos \beta}{2} \right) \right] \\ &= 0.481 * 27.4 \left[(0.129 - 0.448 * 0.123) 1.347 + 0.448 * 0.123 \left(\frac{1 + \cos 35}{2} \right) + 0.2 * 0.129 \left(\frac{1 - \cos 35}{2} \right) \right] \\ &= 2.0 \text{ MJ/m}^2. \end{aligned}$$

From Equation 3, the monthly average array efficiency is

$$\begin{aligned}\bar{\eta}_i &= \eta_{mp,ref} \eta_e \left[1 + \frac{\mu_{mp}}{\eta_{mp,ref}} (\bar{T}_{a,i} - T_{ref}) + \frac{\mu_{mp} \bar{I}_T}{\eta_{mp,ref} U_L} \tau \alpha (1 - \eta_{mp,ref}) Z_i \right] \\ &= 0.104 * 0.9 \left[1 - \frac{0.0005}{0.104} (8 - 25) - \frac{0.0005 * 2 * 10^6}{0.104 * 30.7 * 3600} (1 - 0.104) 1.525 \right] \\ &= 0.090.\end{aligned}$$

From Equation 1, the monthly-average hourly array electrical energy output is

$$\begin{aligned}\bar{E}_i &= A_c \bar{I}_T \bar{\eta}_i \\ &= 4 * 0.427 * 2 * 10^6 * 0.090 / 3600 \\ &= 85.4 \text{ W}.\end{aligned}$$

From Equation 4, the utilizability function is

$$\phi = \begin{cases} 0 & \text{if } X_{c,i} \geq X_m \\ (1 - X_{c,i} / X_m)^2 & \text{if } X_m = 2 \\ \left| \left| g \right| - \left[g^2 + (1 + 2g)(1 - X_{c,i} / X_m)^2 \right]^{1/2} \right| & \text{otherwise} \end{cases}$$

where $X_{c,i}$, R_h , \bar{k}_T , X_m , and g are calculated as

$$X_{c,i} = \bar{L}_i / \bar{E}_i = 100 / 85.4 = 1.166,$$

$$R_h = \bar{I}_T / \bar{I} = \bar{I}_T / (\bar{H}_T r_T) = 2.00 / (13.2 * 0.129) = 1.17,$$

$$\bar{k}_T = \bar{I} / \bar{I}_o = \frac{r_i}{r_d} \bar{K}_T = \frac{0.129}{0.123} 0.481 = 0.5045,$$

$$\begin{aligned}X_m &= 1.85 + 0.169 \bar{R}_h / \bar{k}_T^2 - 0.0696 \cos \beta / \bar{k}_T^2 - 0.981 \bar{k}_T / \cos^2 \delta \\ &= 1.85 + 0.169 * 1.17 / 0.505^2 - 0.0696 * \cos 35 / 0.505^2 - 0.981 * 0.505 / \cos^2 (-2.4) \\ &= 1.907, \text{ and}\end{aligned}$$

$$g = (X_m - 1)/(2 - X_m) = (1.907 - 1)/(2 - 1.907) = 9.76.$$

Since neither $X_{c,i} \geq X_m$ nor $X_m = 2$ from the calculation results above

$$\begin{aligned} \phi &= \left| g - \left[g^2 + (1 + 2g)(1 - X_c / X_m)^2 \right]^{1/2} \right| \\ &= \left| 9.76 - \left[9.76^2 + (1 + 2 * 9.76)(1 - 1.166 / 1.907)^2 \right]^{1/2} \right| \\ &= 0.159. \end{aligned}$$

Therefore, the monthly-average fraction of the load for the hour 10-11 AM carried by the PV system without batteries, $f_{o,i(10:00-11:00 AM)}$, is

$$\begin{aligned} f_{o,i(i=10-11 AM)} &= \frac{\bar{E}_{L,i}}{\bar{L}_i} = \frac{\bar{E}_i(1 - \phi_i)}{\bar{L}_i} = \frac{85.4(1 - 0.159)}{100} \\ &= 0.718 \text{ (71.8\%)}. \end{aligned}$$

Table 1 shows the results for all of the hours.

Hour	T_a ° C	\bar{I}_T MJ	Z_i	$\bar{\eta}_i$	\bar{E}_i Wh	\bar{L}_i Wh	$\bar{X}_{c,i}$	ϕ_i	$\bar{E}_{ex,i}$ Wh	$\bar{E}_{L,i}$ Wh
6-7	4	0.15	2.228	0.102	7	0	0.000	1.000	7	0
7-8	5	0.60	1.906	0.099	28	0	0.000	1.000	28	0
8-9	5	1.11	1.728	0.096	50	0	0.000	1.000	50	0
9-10	6	1.61	1.604	0.093	71	100	1.412	0.087	6	65
10-11	8	2.00	1.525	0.090	86	100	1.166	0.159	14	72
11-12	10	2.22	1.486	0.088	93	100	1.072	0.193	18	75
12-1	11	2.22	1.486	0.088	93	100	1.077	0.191	18	75
1-2	12	2.00	1.525	0.088	84	100	1.189	0.149	13	71
2-3	12	1.61	1.604	0.090	69	100	1.454	0.075	5	64
3-4	11	1.11	1.728	0.093	49	0	0.000	1.000	49	0
4-5	10	0.60	1.906	0.096	27	0	0.000	1.000	27	0
5-6	9	0.15	2.228	0.100	7	0	0.000	1.000	7	0
Totals					664	600			242	422

Table 1. Values and Calculation Results for the Calculation of Monthly-Average Fraction of the Load Carried by the PV System without Batteries.

The monthly-average electrical output \bar{E} is 664 Wh, the monthly-average load \bar{L} is 600 Wh, and the monthly-average to the load \bar{E}_L is 422 Wh. So the monthly-average fraction of the load carried by the PV system without batteries, f_o , is

$$f_o = \frac{\bar{E}_L}{\bar{L}} = \frac{422}{600}$$

$$= 0.703 \text{ (70.3\%)}$$

6.2 Example 2: Calculations of Monthly Electrical Output and Solar Fraction for a PV Power System Array Using the PV F-Chart Program of DOS Version 3.1.

This second example shows the selections of system, collector type and other parameters that are needed for the PV F-Chart program to calculate the hourly, monthly, and annual electrical output and solar fraction for a PV power system array.

Figures 2 and 3 show the selection of system type and collector type. In this example, system type 3, a stand-alone system, is selected and collector type 1, flat-plate, is selected.

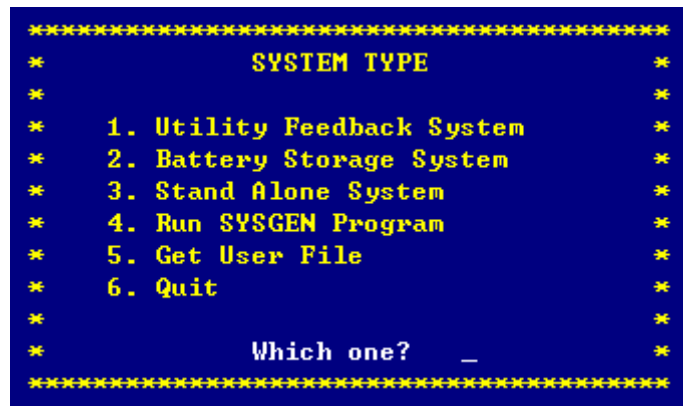


Figure 2. Selection of System Type in the PV F-Chart Program.

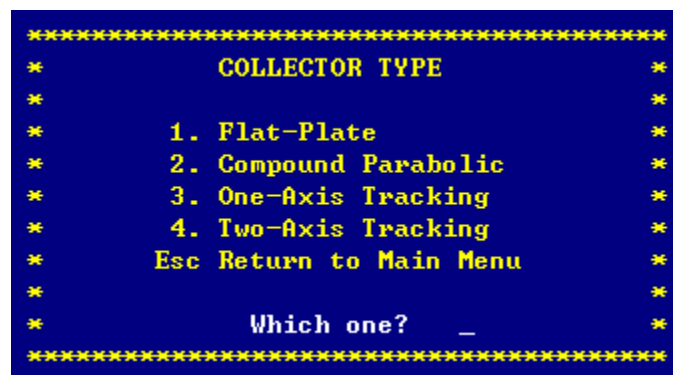


Figure 3. Selection of Collector Type in the PV F-Chart Program.

Figure 4 shows the parameters and values used for running PV F-Chart example for the Houston, Texas, climate.

1	City number for HOUSTON TX.....	102	
2	Output: 1 for summary, 2 for detailed (Neg: graph)	1	
3	Cell temperature at NOCT conditions.....	44	C
4	Array reference efficiency.....	.104	
5	Array reference temperature.....	28	C
6	Max. power eff. temperature coeff. (times 1000)...	4.3	1/C
7	Eff. of maximum power point tracking electronics..	.9	
8	Efficiency of power conditioning electronics.....	.88	
9	Percent standard deviation of the load.....	0	%
10	Array area.....	6	m^2
11	Array slope.....	50	deg
12	Array azimuth (south=0).....	0	deg

Figure 4. Detail Input Parameters Used in the PV F-Chart Program for the Example Problem 2.

Using the above inputs, PV F-Chart calculates electricity produced by the system as shown in Figure 5 and Figure 6. Figure 5 shows the hourly values predicted for the January performance, including the total solar radiation incident on the collector, the array efficiency, the total electric demand on the system, the percent of the load supplied directly by the array (F), and the total electrical energy (XS). The monthly total values are shown in the bottom of the figure, where the solar radiation is 648.90 kWh for the month of January, and the percent of load (F) supplied directly by the array is 30.3%.

Jan					
Time	Solar kWh	Eff %	Load kWh	F %	XS kWh
7- 8	22.04	8.8	3.10	44.1	0.34
8- 9	45.74	9.1	3.29	68.7	1.43
9-10	69.34	9.1	3.50	79.8	2.75
10-11	88.36	9.0	3.75	84.6	3.80
11-12	98.97	8.9	4.00	86.2	4.30
12-13	98.97	8.9	4.25	85.3	4.10
13-14	88.36	8.9	4.46	81.8	3.27
14-15	69.34	9.0	4.65	74.1	2.03
15-16	45.74	9.0	4.77	59.3	0.79
16-17	22.04	8.6	4.84	33.2	0.07
Month	648.90	8.9	93.00	30.3	22.87

Figure 5. Calculation Results of Monthly-Average Fraction of the Load Carried by the PV System for January.

Figure 6 shows the calculation results of annual fraction of the load carried by the PV system and monthly fraction for the 12 months. The fifth column with 'Buy' is the total electrical energy that should be purchased from the utility to satisfy the load in kWh. The result in Figure 6 shows us that the annual fraction of the load supplied by the array is 35.5%; therefore, 706.6 kWh of electricity must be purchased from the utility to meet the total load of the system in the Houston, Texas, climate.

Summary					
	Solar kWh	Load kWh	F %	Buy kWh	XS kWh
Jan	648.9	93.0	30.3	64.8	22.9
Feb	677.4	84.0	33.2	56.1	24.3
Mar	799.7	93.0	35.3	60.1	27.1
Apr	791.3	90.0	36.8	56.9	24.8
May	805.3	93.0	38.3	57.4	22.0
Jun	789.8	90.0	39.3	54.6	20.0
Jul	826.9	93.0	39.0	56.7	21.6
Aug	866.0	93.0	37.9	57.7	25.7
Sep	848.4	90.0	36.9	56.8	27.6
Oct	909.5	93.0	36.4	59.1	33.0
Nov	719.0	90.0	32.4	60.9	25.8
Dec	631.0	93.0	29.7	65.4	21.8
Yr	9313.2	1095.0	35.5	706.6	296.6

Figure 6. Calculation Results of Yearly-Average Fraction of the Load Carried by the PV System.

7 References

Clark, D.R., Klein, S.A., Beckman, W.A. 1984. A method for estimating the performance of photovoltaic systems. *Solar Energy*, Vol. 33, No. 6, pp. 551-555.

Clark, D.R., Klein, S.A., Beckman, W.A. 1983. Algorithm for evaluating hourly radiation utilizability function. *ASME J. Solar Energy Engineering*, Vol. 105, pp. 281-287.

Duffie, J.A., Beckman, W.A. 1991. *Solar Engineering of Thermal Processes*, 2nd Ed. Wiley-Interscience, New York.

Erbs, D.G., Klein, S.A., Beckman, W.A. 1983. The estimation of degree-days and ambient temperature bin data from monthly-average temperatures. *ASHRAE Journal*, Vol. 25, pp. 60-65.

Erbs, D.G., Klein, S.A., Duffie, J.A. 1982. Estimation of the diffuse radiation fraction for hourly, daily, and monthly-average global radiation. *Solar Energy*, Vol. 28, p. 293.

Evans, D.L., Facinelli, W.A., Otterbein, R.T. 1978. Combined photovoltaic/ thermal system studies. *Technical Report, SAND 78-7031*, Arizona State University – Tempe, AZ.

Evans, D.L., Facinelli, W.A., Koehler, L.P. 1980. Simplified design guide for estimating photovoltaic flat array and system performance. *Technical Report, SAND 80-7185*, Sandia National Laboratories, Albuquerque, New Mexico.

Hottel, H.C., Whillier, A. 1955. Evaluation of flat-plate collector performance. *Trans. of the Conference on the Use of Solar Energy -The Scientific Basis*, The University of Arizona, Vol. 2, pp. 74-104.

Klein, S.A. 1973. TRNSYS - A transient simulation program. *Rept. 3, Solar Energy Laboratory*, University of Wisconsin-Madison.

Klein, S.A. et al. 1981. TRNSYS - A transient system simulation program, *EES Report #38-11, Solar Energy Laboratory*, University of Wisconsin – Madison.

Klein, S.A., Beckman, W.A. 1985. PV F-Chart User's Manual: DOS Version. F-Chart Software, 4406 Fox Bluff Road, Middleton, Wisc. 53562, www.fchart.com.

Lein, S.A., Beckman, W.A. 1993. PV F-Chart User's Manual: Windows Version. F-Chart Software, 4406 Fox Bluff Road, Middleton, Wisc. 53562, www.fchart.com.

Liu, B.Y.H., Jordan, R.C. 1963. A rational procedure for predicting the long term performance of flat plate solar energy collectors. *Solar Energy*, Vol. 7, p. 53.

Liu, B.Y.H., Jordan, R.C. 1960. The interrelationship and characteristic distribution of direct, diffuse, and total solar radiation. *Solar Energy*, Vol., 4, No.3, pp. 1-19.

Siegel, M.D., Klein, S.A., Beckman, W.A. 1981. A simplified method for estimating the monthly-average performance of photovoltaic systems. *Solar Energy*, Vol. 26, pp. 413-418.

Menicucci, D.F., Fernandez, J.P. 1984. Verification of photovoltaic system modeling codes based on system experiment data. *Proceedings of the Eighteenth IEEE Photovoltaic Specialists Conference*, Las Vegas, Nevada, p. 1335.

Whillier, A. 1953a. The Utilization of Solar Energy in South Africa, *Journal of South Africa Institute of Mechanical Engineers*, Vol. 2, Pt. 9, pp. 260-266 (April).

Whillier, A. 1953b. Solar energy collection and its utilization for house heating. *Ph.D. Dissertation*, Dept. of Mechanical Engineering, MIT.